



ORVIATM

MULTI CROP COMBINE HARVESTER

FROM

KBS AGROS

KBS AGROS

KBS AGROS India Private Limited is a pioneering agricultural machinery company that specializes in marketing innovative crawler harvester machines. With a focus on enhancing farm efficiency and productivity, our company is dedicated to providing cutting-edge solutions for the modern farmer. Our crawler harvester machines are designed to navigate challenging terrain with ease, making them ideal for a variety of crops and farming applications. At KBS AGROS, we are committed to revolutionizing the agricultural landscape through technology and innovation. Head quartered in Vijayawada, Andhrapradesh.

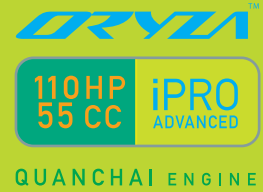


KBS AGROS
has launched
the advanced
multi crop

crawler combine harvester

in India. The ORYZA™ iPRO

advanced is the machine



equipped with 110 HP QUANCHAI Engine and 55 cc

HST, with rust proof manganese parts to

Harvest better Harvest smarter

OUR MISSION is to empower each and every farmer and Machine owner to reap more benefits. To provide the Indian farmers with a durable, reliable and low-cost maintenance product. OUR VISION is to be the market leader with continuous innovation. Develop innovative solutions to constantly improve the lifestyle of Indian farmers, with a collaborative effort.

First of it's kind
True Multi Crop Combine Harvester
with multiple crops compatibility

Faster harvesting, more saving
& prosperity For farmer.

ORYZATM

MULTI CROP COMBINE HARVESTER



PADDY



WHEAT



BARLEY



CORN



MUSTARD



SOYABEAN



Disclaimer :ORYZA Harvester can harvest paddy flawlessly with the attachment & settings from the factory. To harvest other crops which are mentioned above specialized accessory kits required which are sold separately and settings to be made before field operation.

Single Maneuvering Lever

- ★ Single lever operation for machine turning & header movement.
- ★ Speed controlling and braking with single lever.
- ★ Short turning radius due to HST.

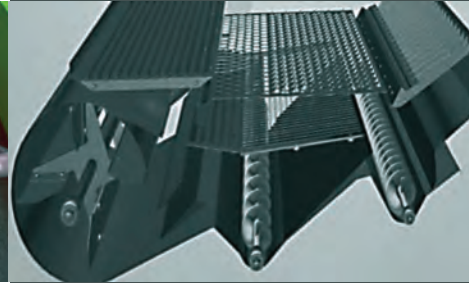
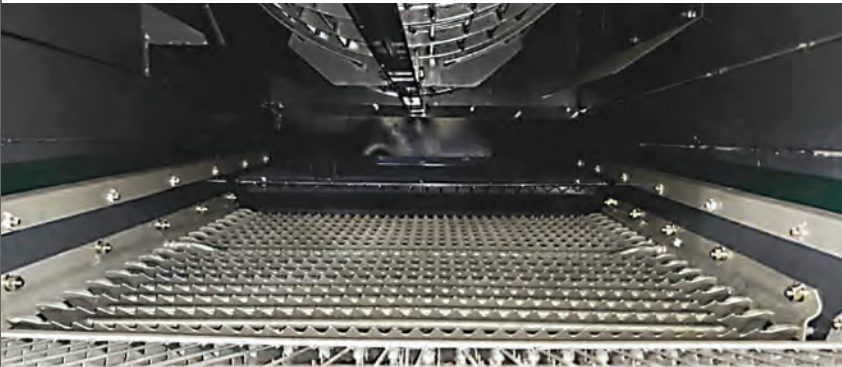


Faster and Convenient Harvesting

- ★ Axial Flow technology of thresher.
- ★ Large thresher clean grains in efficient manner and less grain loss during cleaning.



- ★ Larger sieve area – 2.0 m².
No modification required in thresher for Paddy & wheat etc.



Efficient Grain Cleaning System

All parts are designed to obtain higher operating efficiency and straw free grains.



Single Belt Drive Grain Cleaning System

Single belt drive grain cleaning system for good balance of machine & lesser noise. It is easy to service as well.

Special design of Reel Assembly



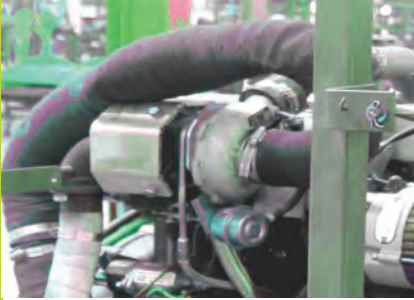
- ★ Longer size & better designed tyres for fallen crops

- ★ Variable RPM of reel



Engine Assembly

- ★ Protective dust cover for efficient radiator cooling



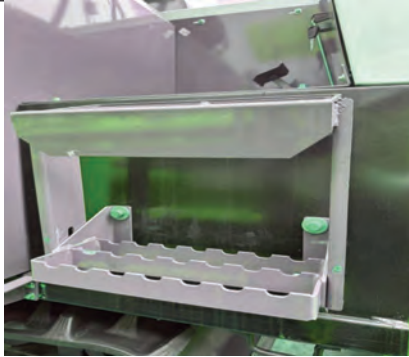
- ★ Turbo charged Engine

- ★ Dry type air cleaner



- ★ Vertical exhaust system

Wetland Harvesting – Special Features



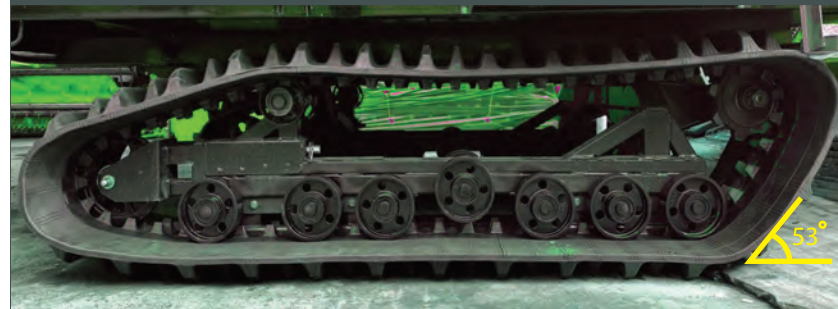
- ★ Adjustable foot step



- ★ Wider track
550 mm x 90 mm (WxH)
Number of grooves 56

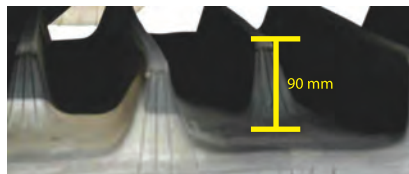


- ★ Higher ground clearance
(370mm)



- ★ 53° Front angle of track for better traction, Sealed bearings for longer life

- ★ Higher depth of grooves
for better traction



Depth: 90mm



- ★ Double acting cylinder
for cutter bar adjustment

Superior Cutterbar



- ★ Cutter position is well beyond track system for cutting near ridges

Cleaner Grains



★ Disclaimer : Images shown above are just for representation purposes.

ORYZA™
MULTI CROP COMBINE HARVESTER

**110HP
55 CC** **iPRO
ADVANCED**

QUANCHAI ENGINE

TECHNICAL SPECIFICATIONS

Item			Unit	ORYZA IPRO ADVANCE
Structure			/	Track-supported Whole-feeding-type
Product model			Hp	MCH110/ ORYZA IPRO ADVANCE
Feeding capacity			kg/s	5.3
Weight			kg	3600
Overall dimension	Length		mm	5465
	Width		mm	2520
	Height		mm	2900
Working efficiency			hm2/h	0.27 ~1.1
Minimum ground clearance			mm	370
Engine	Model		/	Quanchai
	Style		/	Water-Cooled,4-Cylinder,DI-Injection,Turbo Charged
	Rated power		kW	80
	Rated speed		r/min	2600
Gearbox	Gearbox model			95
HST	HST model		cc	55
Header	Header width		mm	2200
	Header type		/	Rotary cutter
	Reel type		/	Eccentric tine type
	Reel diameter		mm	Φ900
Grain cleaning system	Dimensions of threshing drum	Diameter	mm	Φ626
		Length	mm	2200
Grain Unloading	Volume of grain tank		L(Liter)	1600
	Height range of unloading		mm	880 – 4500
Traveling (chassis)	Ground contact pressure of track		kPa	20
	Track gauge		mm	1250
	Transmission type		/	(HST+3-gear) continuously variable-speed
	Pitch		mm	90
	Track	Pitch number	Pitch	56
	specifications	Width	mm	550
	Brake type		/	Multi-disc wet type break
	Theoretical traveling speed		km/h	0 - 8.68
Electrolyte	Diesel tank volume		L (Liter)	210
Liquid and others	Hydraulic oil tank capacity		L	20
	Battery	Model	/	Maintenance-free type
		Voltage	V	12



KBS AGROS

Specially Designed,
Developed & Marketed by:

KBS AGROS INDIA PRIVATE LIMITED

Plot No 244, c block, new auto nagar
Kanur, Vijayawada 520007
email: info@oryza.co.in

For Dealership
Enquiries
CALL: 9912493456
9912763456

oryza.co.in